



Manual

CRS Remote Admin for Windows



Table of Contents

Table of Contents	2
Scope	3
Pre-requisites	3
Introduction	4
Procedures	5
Install CRS Remote Admin	5
Uninstall CRS Remote Admin	5
Starting the service	5
Stopping the service	6
Apply monthly crypto update	6
View statistics	7
Troubleshooting	8
Wrong CRS address	9
Wrong credentials	9
Blocked connection	9

Scope

This document describes how to install and use the CRS Remote Admin application for Windows.

Target audience is end users of CRS Remote Admin.

Pre-requisites

A PC running Windows 7, Windows 8 or Windows 10 with any modern, up-to-date web browser.

Introduction

The CRS Remote Admin software makes it easy to publish crypto updates and perform other administrative tasks on the CRS. The software consists of a service that securely connects to the CRS, and a user interface that is accessed via a web browser.

Before you can use the CRS Remote Admin software, the CRS administrator must create a remote admin on the CRS and configure what the remote admin is authorized to do. For instance, one remote admin might be authorized only to apply crypto updates, whereas another remote admin might be authorized only to view statistics. (See the CRS manual for further information; CAB-12:047.)

Procedures

Install CRS Remote Admin

CRS Remote Admin is installed by launching the installation program. During the installation, you may be prompted to install additional Microsoft libraries that are required by the software.

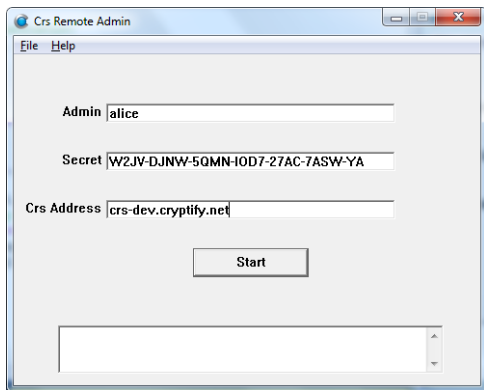
Uninstall CRS Remote Admin

CRS Remote Admin can be uninstalled using the Programs control panel in Windows.

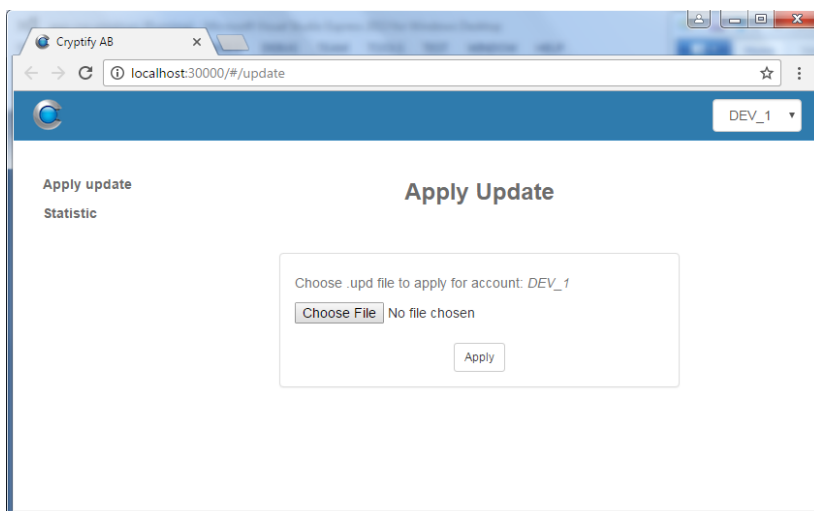
Starting the service

To gain access to the remote admin interface, you must first start the CRS Remote Admin service.

After launching the application, enter your admin name, the secret and the CRS address, all given to you by the CRS administrator. Click on the “Start” button to launch the service.

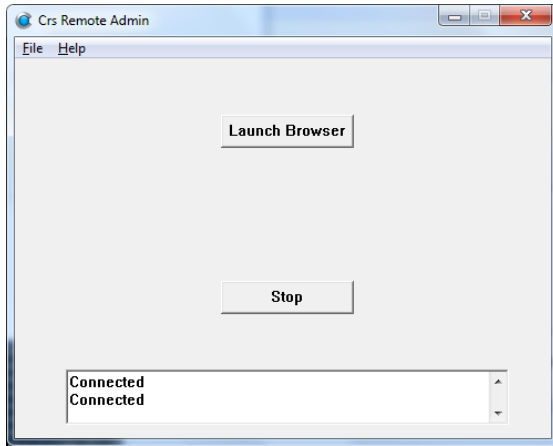


This should immediately open your web browser and display the remote admin user interface. In case the interface is not displayed, please see *Troubleshooting* below.



Stopping the service

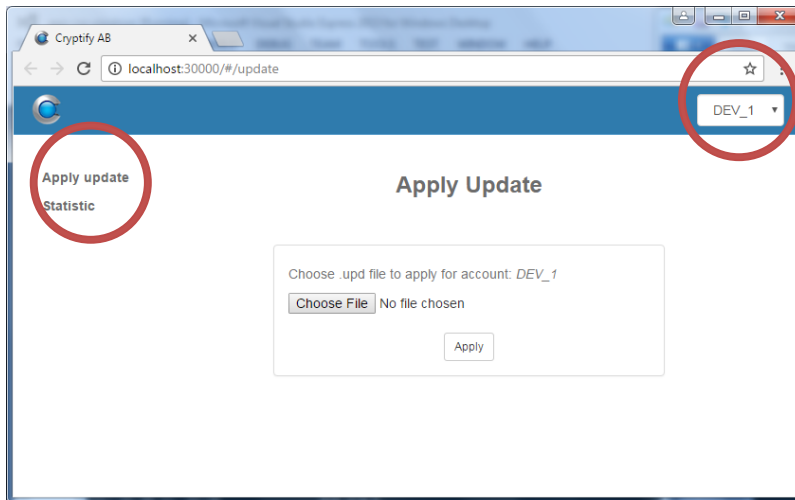
Once you have finished the administrative tasks, the service should be stopped. To stop the service, simply open the CRS Remote Admin application and click the “Stop” button.



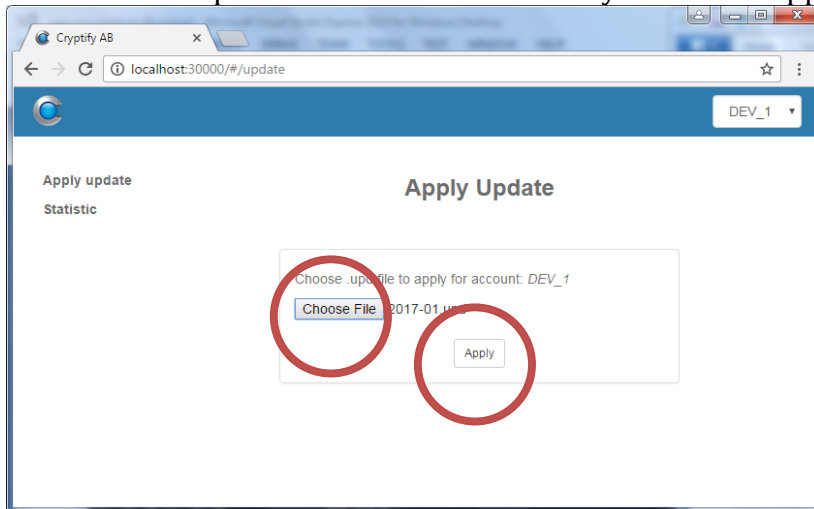
Apply monthly crypto update

It is easy to apply monthly crypto update generated on the CMS.

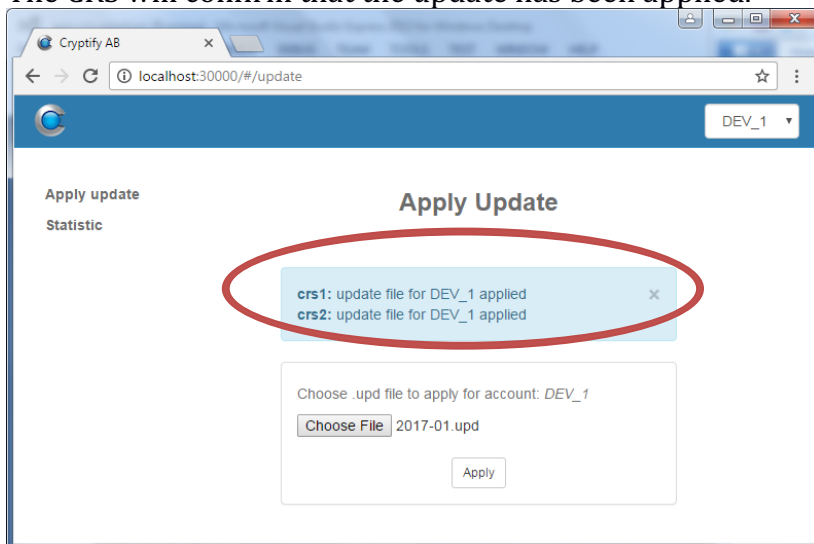
If you administer more than one account (cryptographic domain/CMS) on the CRS, first select the account you wish to work with, then click on “Apply update” in the menu on the left.



Select the file update file from the CMS that you want to apply and click “Apply”.

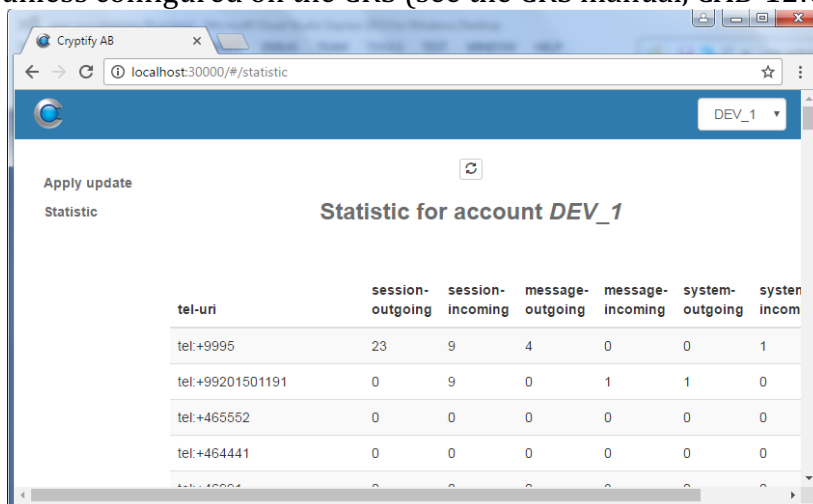


The CRS will confirm that the update has been applied.



View statistics

Click on “Statistic” in the menu on the left. Note that statistics are not collected unless configured on the CRS (see the CRS manual, CAB-12:047).



Configuration file (advanced)

For advanced users, such as those who administer multiple CRSes, it is possible to use a configuration file to automatically fill out the input fields or automatically press the Start-button.

The configuration file is a so called .INI-file, that is, a regular ASCII-encoded text file of the form:

```
[main]
admin = alice
secret = XXXX-XXXX-XXXX-XXXX-XXXX-XXXX-XX
address = crs.example.com
autostart = 1
```

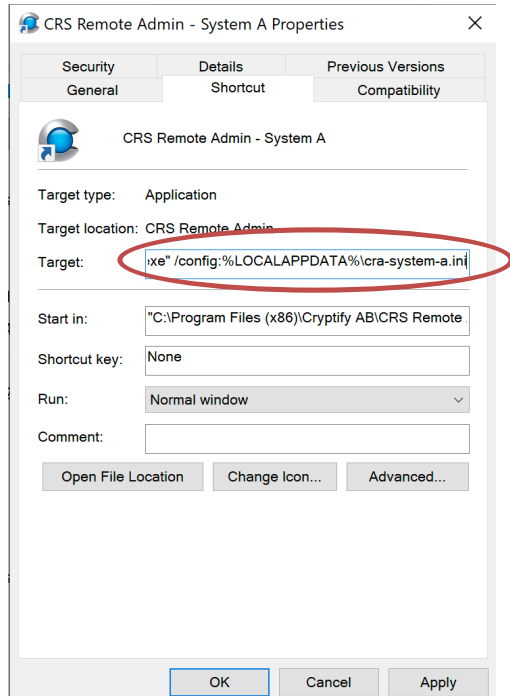
All fields are optional, and it is in general not recommended to store the password in the configuration file unless access to the file can be restricted.

To use the configuration file, the CRS should be launched with an argument “/config:<PATH>”, for example:

```
C:\Program Files (x86)\Cryptify AB\CRS Remote Admin>app-
cra-windows.exe /config:%LOCALAPPDATA%\cra-system-a.ini
```

if the configuration file named “cra-system-a.ini” is stored in the local app data directory. Quoting the path is not supported.

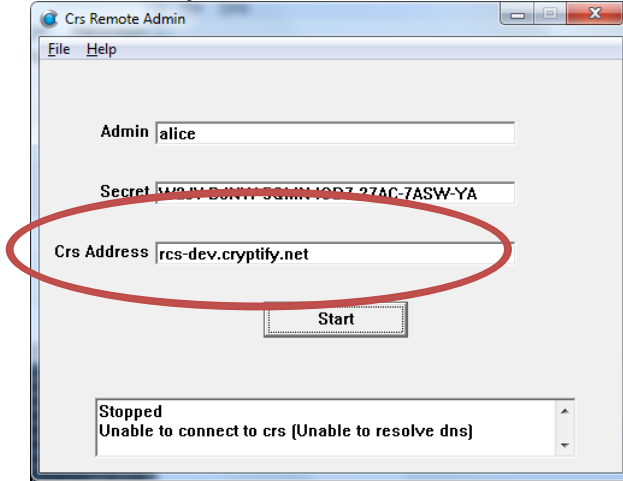
To make this more user-friendly, a shortcut with a target that specifies the configuration file can be created for each system:



Troubleshooting

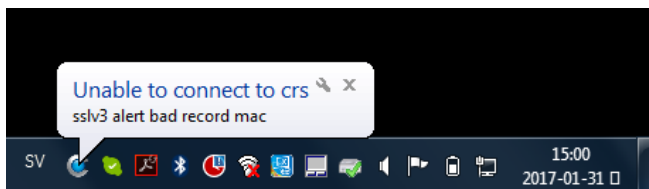
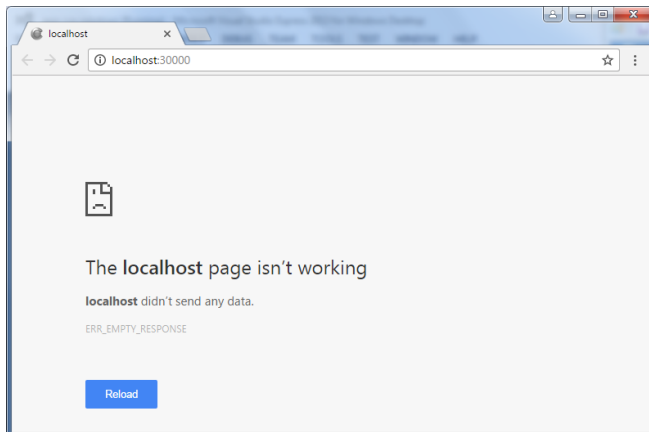
Wrong CRS address

If the service stops and logs the error “Unable to connect to crs (Unable to resolve dns)”, double-check the CRS address for typos.



Wrong credentials

If incorrect credentials are entered, the web page will fail to load and a warning is shown the system tray. Check the admin name and secret for typos.



Blocked connection

If the web page fails to load and a message “Unable to connect to crs (Bad file descriptor)” is logged, make sure that the CRS address is entered correctly and that no firewall rules block connections to that address on TCP-port 5223.